

## A Note from the Principal's Office

We begin our month with our annual Family Science Night and Science Fair on Thursday, February 7<sup>th</sup>. This is a free event for all Allen Dale students and their families. We sent fliers home earlier this week on the event. It will be a fun night, with different hands-on science activities happening around the school. Students who attend will also receive a raffle ticket to be entered into our prize drawings at the end of the evening.

During the 2<sup>nd</sup> week of February we will participate in Kindness Week. We have activities and events planned up until Valentine's Day, and we will challenge the students and staff to participate in as many acts of kindness as they can throughout the week.

This is the time of year when we see a lot of coughing, sneezing, and runny noses around Allen Dale. Please remind your child at home to wash their hands regularly throughout the day, get plenty of sleep during the night, and eat three square meals a day. We will continue to preach this message at Allen Dale as well. As always, if the students are feeling ok, we want them in attendance. It is so

important that students have great attendance, even in the younger grades. Here is to a healthy month, with a lot of fun and learning taking place at Allen Dale!

~ Mr. Musser

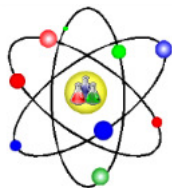
“Allen Dale Elementary is a Title One School”

## **SCIENCE WORKS**

### DAYTIME PRESENTATION

Thursday, February 7<sup>th</sup>

1:10 – p.m.



**“IT'S NOT  
MAGIC, IT'S  
SCIENCE!”**

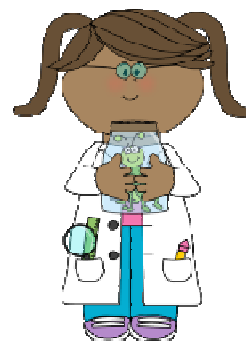
Also join us for...

## **FAMILY SCIENCE NIGHT**

Thursday, February 7<sup>th</sup>

6:00 – 7:00 p.m.

Students will have the opportunity to engage in a variety of science activities throughout the school.



## February Calendar

- 1 Popcorn sales .50
- 5 Good News Club- 1:05 – 2:05 p.m.  
Peace Club – 2:15 - 3:15 p.m.  
Chess Club & Art Club - 2:15 - 3:15 p.m.  
Site Council – 2:30 p.m.
- 6 All District Strings Play-In  
@ GPHS Main Gym
- 7 Science Works Presentation– 1:10 p.m.  
A D Family Science Night – 6 - 7 p.m.  
No Chess Club  
Racquet Club – 2:15 – 3:15 p.m.
- 8 3<sup>rd</sup> Science Works field trip  
Popcorn sales .50
- 11-14 Kindness Week
- 11 Kindness Grams during lunch  
Battle of the Books practice
- 12 Good News Club  
Chess Club/ Art Club
- 14 Valentine Parties in classrooms  
No Popcorn sales today  
Chess Club  
Racquet Club
- 15 NO CLASSES –Professional Development
- 18 NO CLASSES – President's Day
- 19 Good News Club  
Chess Club/ Art Club
- 21 Chess Club/ Racquet Club
- 22 End of Box Tops drive
- 26 Good News Club  
Chess Club/ Art Club
- 27 Battle of the Books -8:15  
Finals @ 1:00
- 28 4<sup>th</sup> Grade Music Program 1:15 & 6:30 p.m.  
Chess Club/ Racquet Club

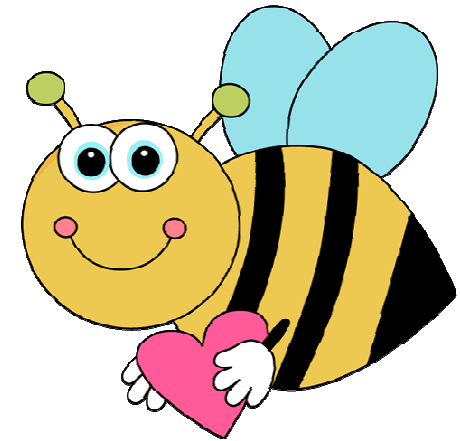
## **Volunteer Opportunities!**

Check out our **Parent Volunteer Website** at:

[www.allendalepta.my-pta.org](http://www.allendalepta.my-pta.org)

Sun	Mon	Tue	Wed	Thu	Fri	Sat
					1  <i>Popcorn Day</i>	2
3	4	5  <i>Good News Club Art Club/ Chess Club Peace Club</i>	6  <i>All District Strings "Play In" - GPHS Main Gym</i>	7  <i>Science Works Presentation 1:10  Racquet Club  Family Science Night- 6:00 - 7:00 p.m.</i>	8  <i>3<sup>rd</sup> Gr. Science Works field trip   Popcorn Day</i>	9
10	11  <i>"Kindness Week" Kindness Grams during lunch</i>	12  <i>Good News Club Chess Club/ Art Club</i>	13	14  <i>No popcorn sales  Valentine's Day -parties in classes  Chess/ Racquet Club</i>	15  <b>NO CLASSES</b>  <i>Prof. Development Day</i>	16
17	18  <b>NO CLASSES</b>  <i>President's Day</i>	19  <i>Good News Club Art Club/ Chess Club</i>	20	21  <i>Chess/ Racquet Club</i>	22  <i>End of Box Tops Collections  Popcorn Day</i>	23
24	25  <i>Chess Club</i>	26  <i>Good News Club Art Club</i>	27  <i>Battle of the Books  Finals @ 1:00 p.m.</i>	28  <i>4<sup>th</sup> Gr. Music Program 1:15 &amp; 6:30 p.m.  Chess/ Racquet Club</i>	1  <i>Popcorn Day</i>	

# Allen Dale Elementary School



## February Newsletter



**We ARE a community dedicated to  
respect, responsibility and learning.**

Principal: Mr. Musser  
Office Manager: Mrs. Daniels

474-5760



<http://www.grantspass.k12.or.us/allendale/>  
Office Hours: 7:30 - 3:00 p.m.  
School Hours: 8:00 - 2:15 p.m.